

Technical data sheet

TP wall and ceiling bracket

Art.-Nr. 6363814



TP wall and ceiling bracket for universal use.



St	Steel
FS	Strip galvanised

Additional product text, instruction
Important! If the clamp is fixed directly to the wall or ceiling, then, for reasons of stability, always use the spacer, type DS 4.

Master data

Item no.	6363814
Type	TPD 245 FS
Description 1	Wall and ceiling strap
Description 2	TP profile
Dimension	B245mm
Material	Steel
Material symbol	St
Surface	Strip galvanised
Surface to DIN	DIN EN 10346
Surface symbol	FS
Smallest sales unit	1,00 Piece
Weight	66,00 kg/100 pc.

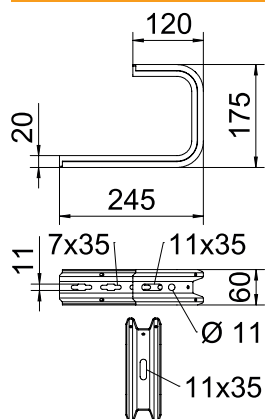
Technical data sheet

TP wall and ceiling bracket

Art.-Nr. 6363814



Technical data



Length	245,00 mm
Width	245,00 mm
Dimension B	245,00 mm
Dimension H	175,00 mm
Version	Suspension bracket (C clamp)
F in ceiling	0,80 kN
F in kN wall	0,87 kN
for width	200,00 mm
Suitable for tray/ladder width	200,00 mm
Suitable for maintaining electrical function	<input type="checkbox"/>
Suitable for cable tray	<input checked="" type="checkbox"/>
Suitable for cable ladder	<input checked="" type="checkbox"/>
Suitable for mesh cable tray	<input checked="" type="checkbox"/>
Adjustable	<input type="checkbox"/>

Appr. load:

Anchor, approved F 1.65	1,65 kN
Anchor, approved F 3.57	3,57 kN

Technical data sheet

TP wall and ceiling bracket

Art.-Nr. 6363814



Technical data

Appr. load:

Technical data sheet

TP wall and ceiling bracket

Art.-Nr. 6363814



Technical data

Appr. load: