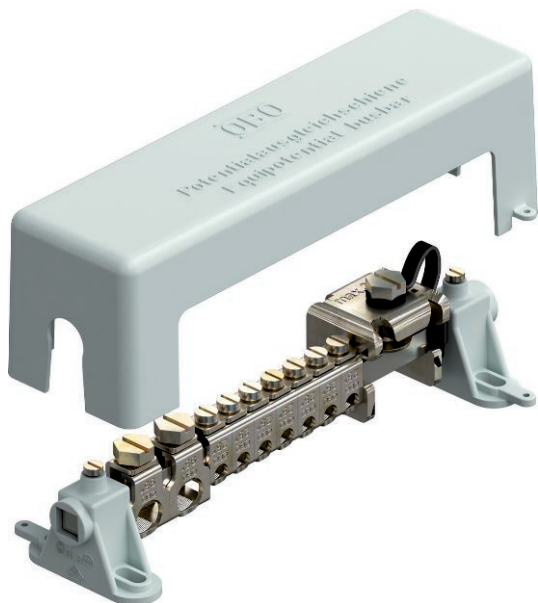


Technical data sheet

Equipotential busbar rail for indoors, VDE-tested

Art.-Nr. 5015650



Equipotential busbar for equipotential bonding to DIN VDE 0100-410/-540 as well as lightning protection equipotential bonding to DIN VDE 0185-305

- According to VDE 0618, Part 1
- With 10 x 10 mm clamping rail made of nickel-plated brass
- With contact-secure series terminals made of electrogalvanised steel
- Cover and rail stands made of grey polystyrene
- Sealable/labellable cover
- Lightning current carrying capacity 100 kA (10/350)
- Tension clamp with screw lock against self-loosening (e.g. required in industry)

Connection options:

- 7 single or multi-wire cables 2.5–25 mm² or fine-wire cables to 16 mm² (max. Ø 7 mm)
- 2 single or multi-wire cable 25–95 mm² or fine-wire cables to 70 mm² (max. Ø 13.5 mm)
- 1 flat conductor 30 x 3.5 mm



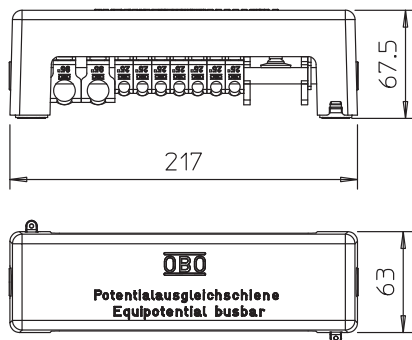
CuZn Brass

Additional product text 1 With sealable cover hood, made from impact-resistant plastic

Master data

Item no.	5015650
Type	1801 VDE
Description 1	Equipotential busbar
Dimension	217mm
Colour	Grey
Material	Brass
Material symbol	CuZn
Smallest sales unit	1,00 Piece
Weight	55,00 kg/100 pc.

Technical data



Length	217,00 mm
Width	63,00 mm
Height	68,50 mm
Connection option 1	7 x single or multi-core cables 2.5–25 mm ² or fine-core cables to 16 mm ² (max. Ø 7 mm)
Connection option 2	2 x single or multi-core cables 25–29 mm ² or fine-core cables to 70 mm ² (max. Ø 13.5 mm)
Connection option 3	1 x flat conductor to FL30 and to max. 5 mm thickness
Quantity of round conductor connections, total	0,00
Quantity of round conductor connections 8 mm	0,00
Quantity of round conductor connections 10 mm	0,00
Quantity of round conductor connections 8-10 mm	0,00
Quantity of flat conductor connections up to 30 mm	1,00
Quantity of flat conductor connections up to 40 mm	0,00
Quantity of cable connections up to 6 mm ² , rigid	0,00
Quantity of cable connections up to 16 mm ² , rigid	0,00

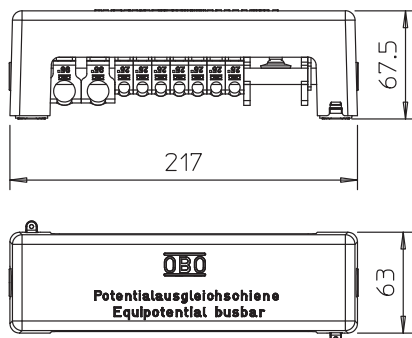
Technical data sheet

Equipotential busbar rail for indoors, VDE-tested

Art.-Nr. 5015650



Technical data



Quantity of cable connections up to 25 mm², rigid 7,00

Quantity of cable connections up to 95 mm², rigid 2,00

Version With cover hood

Shape Modular structure

Insulator

Dividing unit TE (10 mm) 20,00

Cross-section terminal strip 100,00 mm²

Material of the terminal Steel

Surface of the terminal Electrogalvanised

Material of the contact rail Brass

Surface of the contact rail Nickel-plated